

LUMINO



Edition 2

DESIGN. ENLIGHTENED.



# CONTENTS

ColorCORE® Technology	6
Accent A12E	10
Vector FLEX	12
Vector V10S	14
Vector V12S	16
Vector V20S	18
Vector V20S KIT	20
Vector V20S Superlinear	22
Vector V36S	24
Vector V36S OPTIC	26
Vector V36R	28
Vector V36R OPTIC	30
Vector V36I	32
Vector V36I OPTIC	34
Vector Drivers	36
Vector Dimming Interfaces	38
Steorra DOWNLIGHTS	42
ColorCORE® Engine	44
SolidEDGE	46
Projects	50



The Ivy Restaurant, London UK - V10S 2000K

[lumino.lighting](http://lumino.lighting)

LUMINO

## Creating lighting products for lighting designers

For over 30 years Lumino have fused cutting-edge technology with a deeper understanding of design to deliver bespoke global lighting solutions.

With over 20 international partner offices, the British lighting manufacturer collaborates with leading lighting designers, architects and interior designers for projects worldwide.

### Made in Britain

Lumino's architectural lighting products are designed in-house and branded with the Made in Britain logo.

### Five Year Warranty

Lumino products are assembled at our production facility near London. Our skilled production team builds each light fitting, by hand, to precise specifications and quality control standards. This enables us to confidently offer our five year extended warranty on selected products.



# ColorCORE® TECHNOLOGY



## High CRI LED

Lumino ColorCORE® technology delivers warm whites in our highest ever colour rendering tested to TM-30.

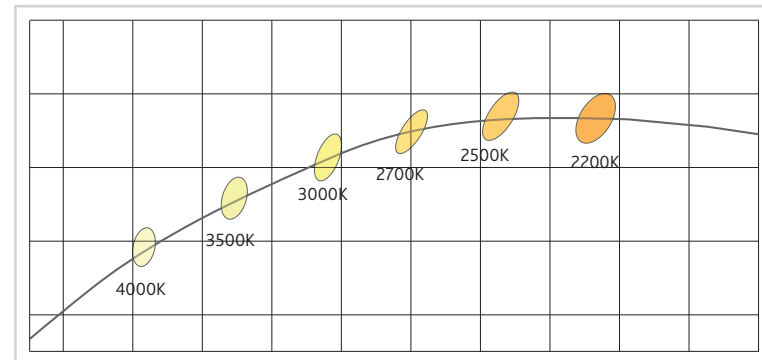
ColorCORE® High CRI stands out with excellent colour rendering of up to 95 Ra<sub>8</sub> and TM-30 values of Fidelity up to 91 R<sub>f</sub> and Gamut up to 102 R<sub>g</sub>.



## ColorCORE® 12W/m

CCT	lm/ft	lm/m	lm/w	CRI Ra	TM30 R <sub>f</sub>	TM30 R <sub>g</sub>
4000K	335	1100	92	≤ 95	90	102
3500K	305	1000	90	≤ 95	90	102
3000K	305	1000	85	≤ 95	91	101
2700K	305	1000	85	≤ 95	90	102
2500K	305	1000	85	≤ 85	81	101
2200K	275	900	73	≤ 85	85	97

Typical figures based on photometric testing and evaluation in accordance with IESNA LM-79-08.



### Warm Whites

ColorCORE® LEDs can be specified in our our 2200K Candlelight Warm White; perfect for residential, hotel and bar projects that can now be intimately lit without compromising colour rendering. 2200K CCT sits in a whole new palette of colour temperatures running from 2200K through 2500K, 2700K, 3000K, 3500K, 4000K CCT.

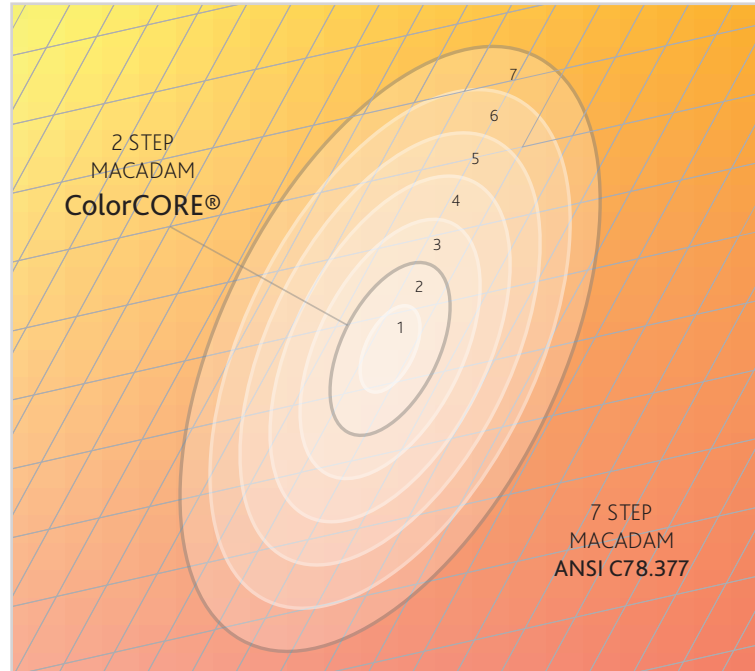


# ColorCORE<sup>®</sup> QUALITY



ColorCORE<sup>®</sup> products are manufactured to precise colour binning specifications within a maximum 2-STEP MacAdam Ellipse area\*.

Vector binning is to 1/36<sup>th</sup> of the ANSI C78.377 defined CCT quadrangle. 2-STEP SDCM (Standard Deviation Colour Matching) gives you the colour matching confidence you need for your project.



**2-STEP  
MACADAM  
BINS**

2200K  
2500K  
2700K  
3000K  
3500K  
4000K

\*Vector V36S/R/I OPTIC ColorCORE<sup>®</sup> lensed profiles are 3-Step.



### LUMEN MAINTENANCE

LM80-08 is the Illuminating Engineering Society of North America (IESNA) approved standard for measuring lumen maintenance of LED light sources. LM80 data can be made into useful LED lifetime projections using the IESNA approved mathematical calculation method TM21-11. ColorCORE® are tested to LM80 standards and extrapolated data is used to mathematically calculate lifetime projections.

### LIFETIME PROJECTION

IEC 62717 is the international standard for performance requirements of LED modules with lifetime metrics show in the LxBy format. L70/L80/L90 indicates how many lumens in percentage related to initial lumens. B50 indicates the L-value will be achieved by at least 50% of the LED modules and the remaining 50% may have a lower lumen value.

#### ColorCORE® Lifetime Data\*

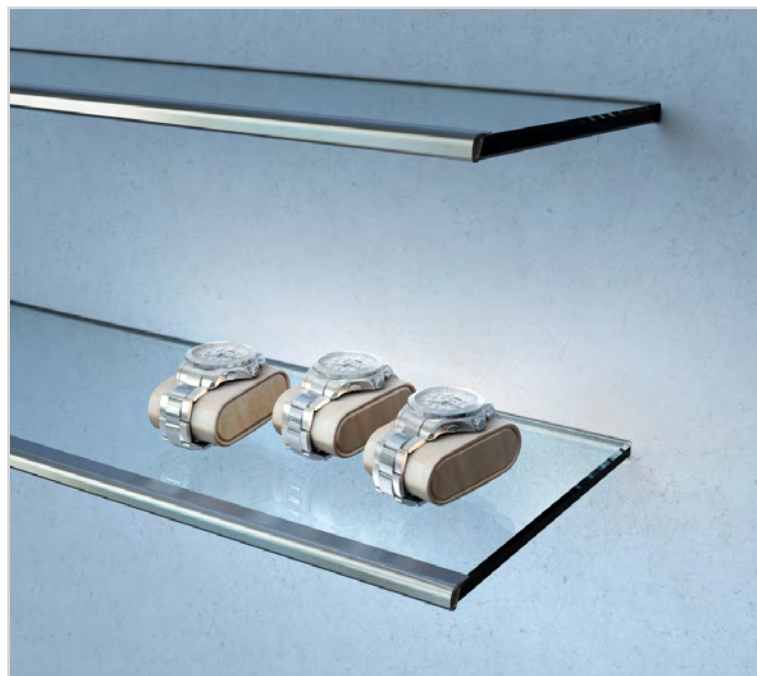
L70B50	@25°C Ta	160,000 hours
L80B50	@25°C Ta	110,000 hours
L90B50	@25°C Ta	60,000 hours

\*Typical Vector ColorCORE® LED lifetime data; check model specific data sheets for exact figures and operating conditions.

# ACCENT A12E / IP50

Discreet edge-light for illuminating objects on glass shelving. Polished silver, gold or black finishes.

ColorCORE® LED with fixed 65° throw in clear or OPX opal diffuser.



17mm  
0.67in



12mm  
0.50in



## KEY FEATURES

ColorCORE®

≤ 1100lm/m

≤ 12w/m

≤ 95lm/w

≤ 95 CRI

2200 - 4000K CCT

CLICK-CONNECT 

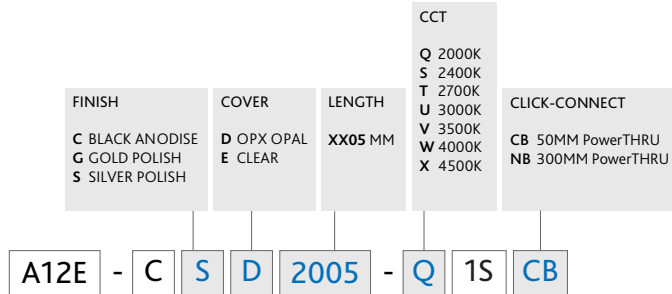
24VDC CV

IP50





CODES



ACCESSORIES

VECA-CA100-R1  
Click-Connect Cable 1.0M

Dimmable Drivers page 36

Online SPEC GUIDE  
for more information



# VECTOR FLEX / IP10

Flexible lighting board just 8mm wide with a fine-pitched line of ColorCORE® LEDs for concealed lighting applications.

Supplied in 8 metre reels and site cuttable.



8mm  
0.32in

1.5mm  
0.06in



## KEY FEATURES

ColorCORE®

≤ 1100lm/m

≤ 12w/m

≤ 95lm/w

≤ 95 CRI

2200 - 4000K CCT

CLICK-CONNECT 

24VDC CV

IP10





## CODES

V F X S - C 8 0 0 0 - Q 1 S

CCT  
Q 2000K  
S 2400K  
T 2700K  
U 3000K  
V 3500K  
W 4000K  
X 4500K

## ACCESSORIES

VECA-CA150-R1  
End Power Feed 500mm

VECA-CA151-R1  
Straight Power Link

VECA-CA152-R1  
Corner Connector 50mm

Dimmable Drivers page 36

Online SPEC GUIDE  
for more information



# VECTOR V10S / IP10

Ultra-slim Vector V10S  
cove lighting profile, just  
10.5mm wide with a single  
line of LEDs in ColorCORE®  
performance grades.



## KEY FEATURES

ColorCORE®

≤ 1100lm/m

≤ 12w/m

≤ 94lm/w

≤ 95 CRI

2000 - 4500K CCT

CLICK-CONNECT 

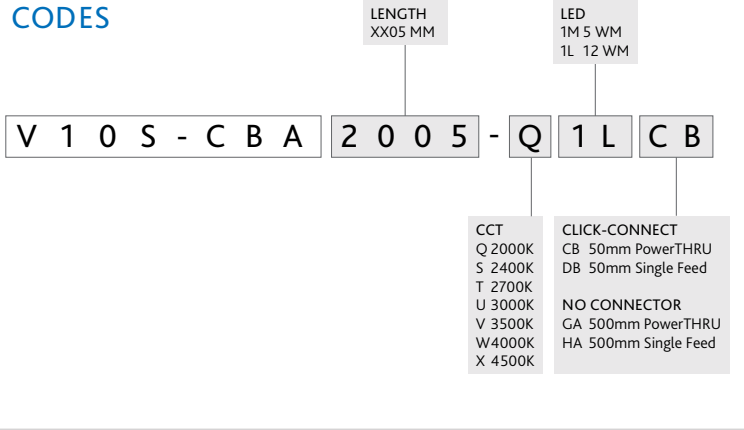
24VDC CV

IP10





CODES



ACCESSORIES

V10S-MA620-R1  
Rotation Mount (20pcs)

VECA-CA100-R1  
Click-Connect Cable 1.0m

VECA-CA025-R1  
Click-Connect Cable 0.25m

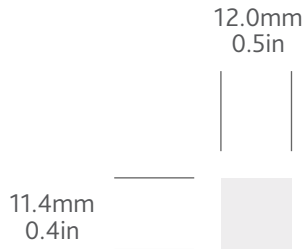
Dimmable Drivers page 36

Online SPEC GUIDE  
for more information



# VECTOR V12S / IP50 / IP67

Compact V12S profile,  
12.0mm wide with single line  
of LEDs behind an opal or  
clear cover suitable for dry  
IP50 or wet locations to IP67.



## KEY FEATURES

ColorCORE®

≤ 1100lm/m

≤ 12w/m

≤ 94lm/w

≤ 95 CRI

2000 - 4500K CCT

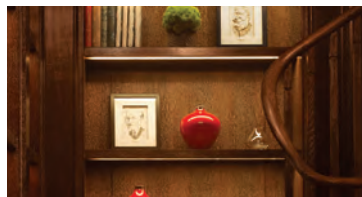
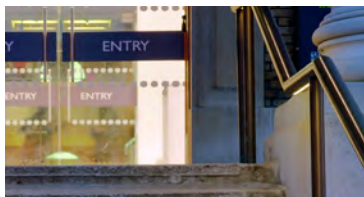
CLICK-CONNECT\* 

24VDC CV

IP50 / IP67 







**CODES**

<b>IP RATING</b> C IP50 I IP67	<b>COVER</b> D OPX OPAL E CLEAR	<b>LENGTH</b> XX05 MM	<b>LED</b> 1M 5 WM 1L 12 WM
--------------------------------------	---------------------------------------	--------------------------	-----------------------------------

**V 1 2 S - C D D 2 0 0 5 - Q 1 L C B**

<b>FINISH</b> D SILVER (Anodised) E WHITE (RAL 9003) F BLACK (RAL 9005)	<b>CCT</b> Q 2000K S 2400K T 2700K U 3000K V 3500K W 4000K X 4500K	<b>CLICK-CONNECT*</b> CB 50mm PowerTHRU DB 50mm Single Feed  <b>NO CONNECTOR</b> GA 500mm PowerTHRU HA 500mm Single Feed
--	---	--

\*not available for IP67

## ACCESSORIES

V12S-MA520-R1  
Standard Mount (20pcs)

V12S-MA620-R1  
Rotation Mount (20pcs)

VECA-CA100-R1  
Click-Connect Cable 1.0m

VECA-CA901-R1  
IDC Connector (pair) for IP67

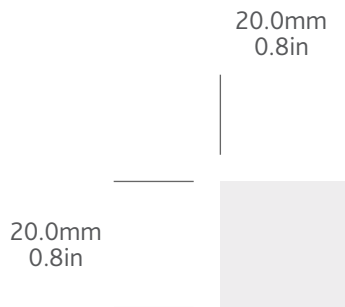
Dimmable Drivers page 36

Online SPEC GUIDE  
for more information



# VECTOR V20S / IP50 / IP67

V20S profile, 20.0mm wide with single or twin line of LEDs behind an opal or clear cover suitable for dry IP50 or wet locations to IP67.



## KEY FEATURES

ColorCORE®

≤ 2200lm/m

≤ 24w/m

≤ 94lm/w

≤ 95 CRI

2000 - 4500K CCT

CLICK-CONNECT\* 

24VDC CV

IP50 / IP67 





**CODES**

<b>IP RATING</b> C IP50 I IP67	<b>COVER</b> D OPX OPAL E CLEAR	<b>LENGTH</b> XX05 MM	<b>LED</b> 1M 5 WM 1L 12 WM 2L 24 WM
--------------------------------------	---------------------------------------	--------------------------	---

V 2 0 S - C D D 2 0 0 5 - Q 1 L C B

<b>FINISH</b> D SILVER (Anodised) E WHITE (RAL 9003) F BLACK (RAL 9005)	<b>CCT</b> Q 2000K S 2400K T 2700K U 3000K V 3500K W 4000K X 4500K	<b>CLICK-CONNECT*</b> CB 50mm PowerTHRU DB 50mm Single Feed  <b>NO CONNECTOR</b> GA 500mm PowerTHRU HA 500mm Single Feed
--	---	--

\*not available for IP67

## ACCESSORIES

V20S-MA520-R1  
Standard Mount (20pcs)

V20S-MA620-R1  
Rotation Mount (20pcs)

VECA-CA100-R1  
Click-Connect Cable 1.0m

VECA-CA901-R1  
IDC Connector (pair) for IP67

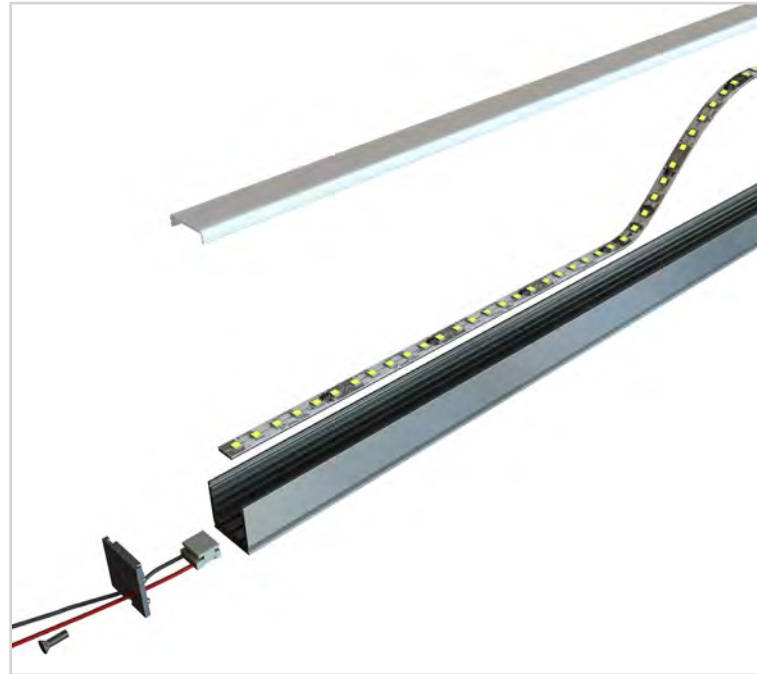
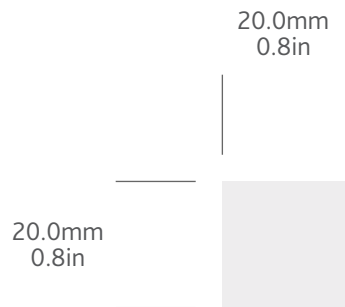
Dimmable Drivers page 36

Online SPEC GUIDE  
for more information



# VECTOR V20S KIT / IP50

V20S KIT allows installers to build the profile on-site ensuring a perfect fit everytime. Supplied as an 8m project pack.



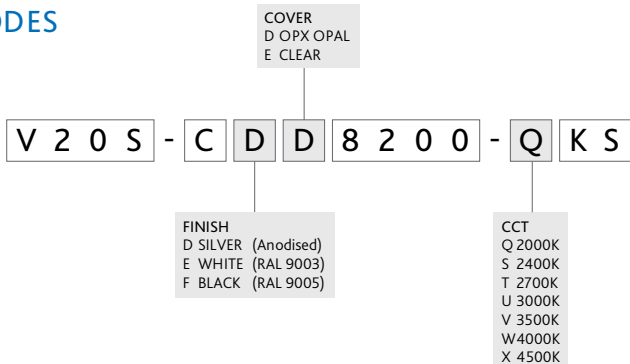
## KEY FEATURES

ColorCORE®  
≤ 1100lm/m  
≤ 12w/m  
≤ 94lm/w  
≤ 95 CRI  
2000 - 4500K CCT  
24VDC CV  
IP50





CODES



ACCESSORIES

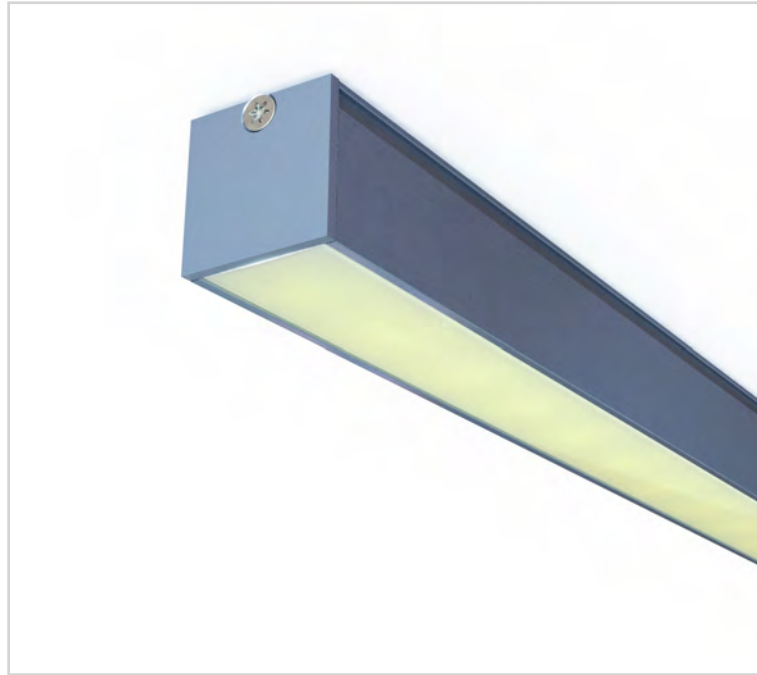
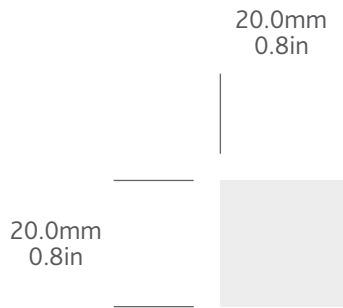
- V20S-MB202-R1  
End cap (pair)
- VECA-CA150-R1  
End Feed Connector
- VECA-CA152-R1  
Linear Power Link
- V20S-MA520-R1  
Standard Mount (20pcs)
- V20S-MA620-R1  
Rotation Mount (20pcs)

Dimmable Drivers page 36

Online SPEC GUIDE  for more information

# VECTOR V20S SUPERLINEAR / IP50 / IP67

V20S Superlinear provides a fully continuous zero-imaging line-of-light designed for dry locations to IP50 or wet locations to IP67.



## KEY FEATURES

ColorCORE®

≤ 2200lm/m

≤ 24w/m

≤ 94lm/w

≤ 95 CRI

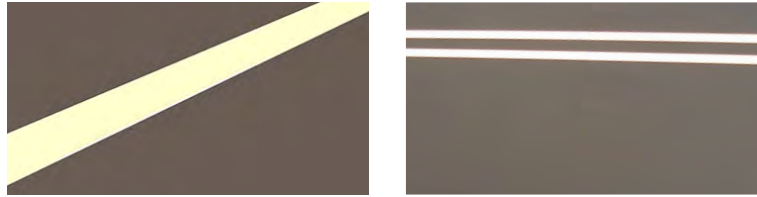
2000 - 4500K CCT

CLICK-CONNECT\* 

24VDC CV

IP50 / IP67 





**CODES**

<b>IP RATING</b> C IP50 I IP67	<b>COVER</b> D OPX OPAL E CLEAR	<b>LENGTH</b> XX05 MM	<b>LED</b> 1S 12 WM 1U 24 WM
--------------------------------------	---------------------------------------	--------------------------	------------------------------------

**V 2 0 S - C D D 2 0 0 5 - Q 1 S C B**

<b>FINISH</b> D SILVER (Anodised) E WHITE (RAL 9003) F BLACK (RAL 9005)	<b>CCT</b> Q 2000K S 2400K T 2700K U 3000K V 3500K W 4000K X 4500K	<b>CLICK-CONNECT*</b> CB 50mm PowerTHRU DB 50mm Single Feed  <b>NO CONNECTOR</b> GA 500mm PowerTHRU HA 500mm Single Feed
--	---	--

\*not available for IP67

**ACCESSORIES**

V20S-MA520-R1  
Standard Mount (20pcs)

V20S-MA620-R1  
Rotation Mount (20pcs)

VECA-CA100-R1  
Click-Connect Cable 1.0m

VECA-CA901-R1  
IDC Connector (pair) for IP67

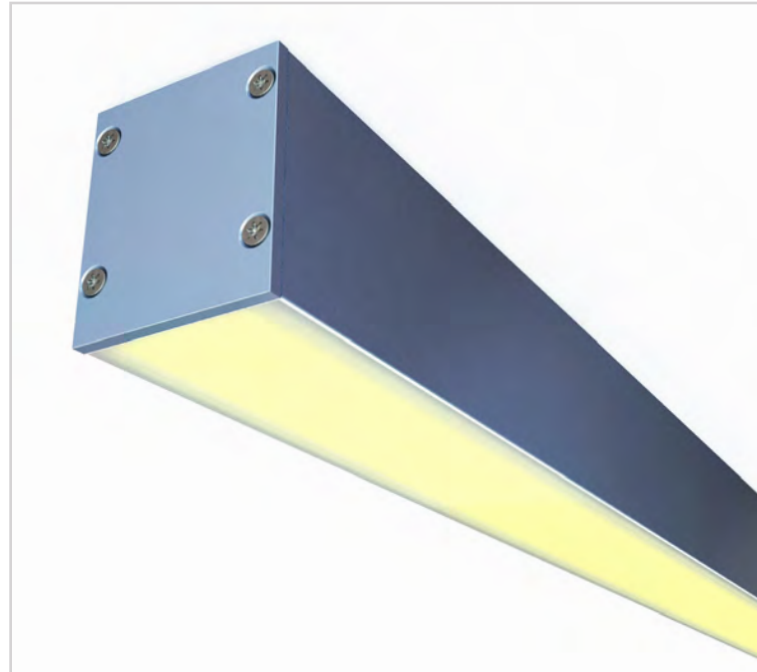
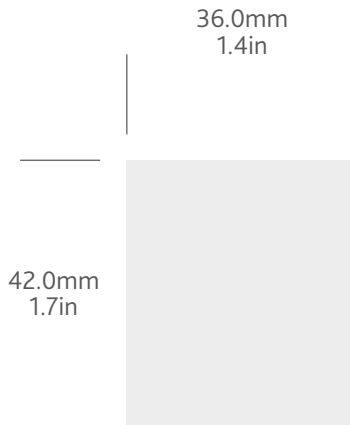
Dimmable Drivers page 36

Online SPEC GUIDE  
for more information



# VECTOR V36S / IP50 / IP64

V36S in 36mm width provides a continuous zero-imaging line-of-light using the high efficiency OPX™ opal diffuser up to IP64.



## KEY FEATURES

ColorCORE®

≤ 3300lm/m

≤ 36w/m

≤ 94lm/w

≤ 95 CRI

2000 - 4500K CCT

CLICK-CONNECT 

24VDC CV

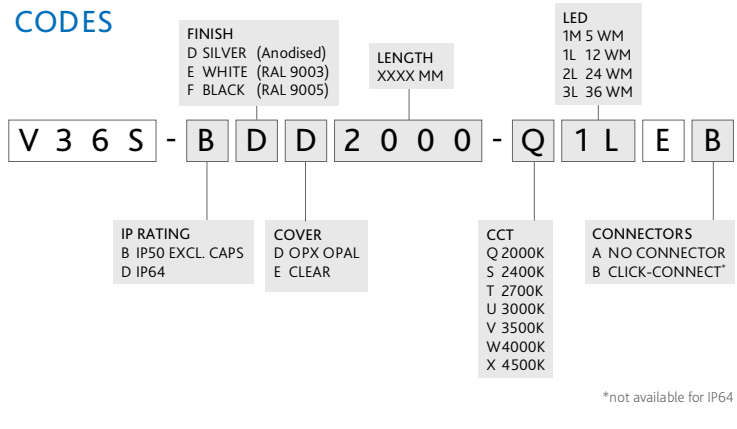
IP50 / IP64 







CODES



ACCESSORIES

V36S-MB202-R1  
End Cap Kit (pair) + 5mm

V36S-JA203-R1  
Linear Joining Kit

V36S-MS501-R1  
Stealth Mount (1pc)

VECA-CA100-R1  
Click-Connect Cable 1.0m

V36S-MA301-R1  
Suspension Wire

V36S-MA302-R1  
Suspension Powerfeed

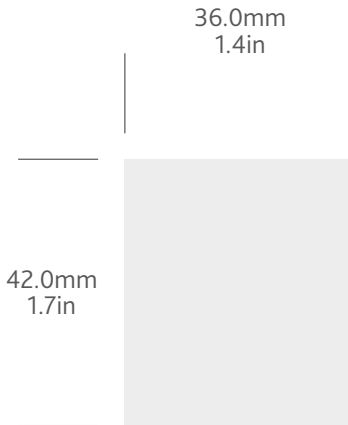
Dimmable Drivers page 36

Online SPEC GUIDE  
for more information



# VECTOR V36S OPTIC / IP50 / IP64

V36S OPTIC offers designers a linear surface mounted profile for wall grazing, narrow and wide beam lighting effect.



## KEY FEATURES

ColorCORE® 3-Step  
≤ 3000lm/m  
≤ 58w/m  
≤ 52lm/w  
≤ 91 CRI  
2700 - 4500K CCT  
500mA CC  
IP50 / IP64





**CODES**

IP RATING C IP50 D IP64	BEAM F 45x21° G 22° H 37°	LENGTH 305 MM 600 MM 900 MM 1190 MM	GLARE CONTROL 1 NONE B IN-LINE LOUVRE C TRANSVERSE LOUVRE
-------------------------------	------------------------------------	---	--

V 3 6 S - C D F 1 1 9 0 - T 1 W H A

FINISH D SILVER (Anodised) E WHITE (RAL 9003) F BLACK (RAL 9005)	CCT T 2700K U 3000K V 3500K W 4000K X 4500K
---	--

\*not available for IP64

**ACCESSORIES**

V36S-MS501-R1  
Stealth Mount (1pc)

V36S-MA601-R1  
Rotation Mount (1pc)

V36S-MA301-R1  
Suspension Wire\*

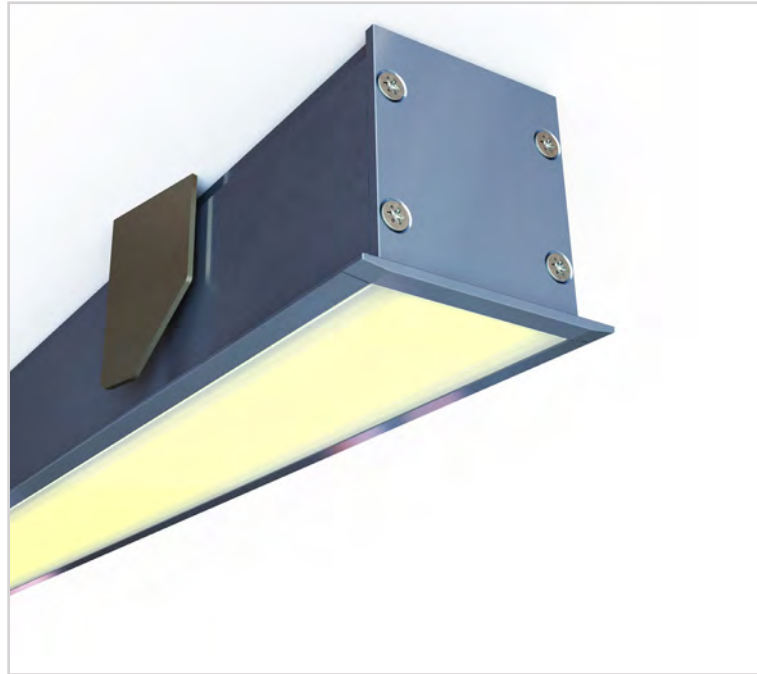
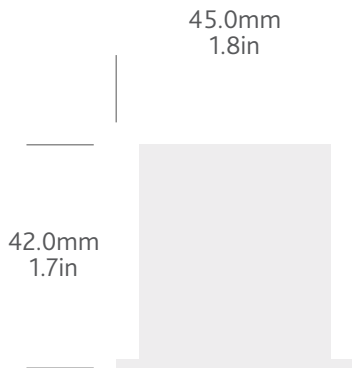
V36S-MA302-R1  
Suspension Powerfeed\*

Dimmable Drivers page 36

Online SPEC GUIDE   
for more information

# VECTOR V36R / IP50

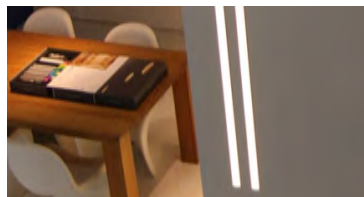
V36R is ideal for interior ceiling or wall recessed installations and incorporates the OPX™ opal diffuser in continuous zero-imaging line-of-light design.



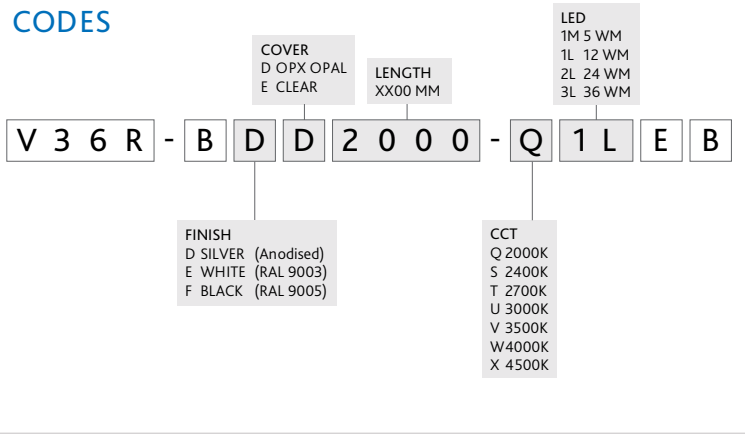
## KEY FEATURES

- ColorCORE®
- ≤ 3300lm/m
- ≤ 36w/m
- ≤ 94lm/w
- ≤ 95 CRI
- 2000 - 4500K CCT
- CLICK-CONNECT 
- 24VDC CV
- IP50





CODES



ACCESSORIES

V36R-MB202-R1  
End Cap Kit (pair) +10mm

V36R-JA203-R1  
Linear Joining Kit

VECA-CA100-R1  
Click-Connect Cable 1.0m

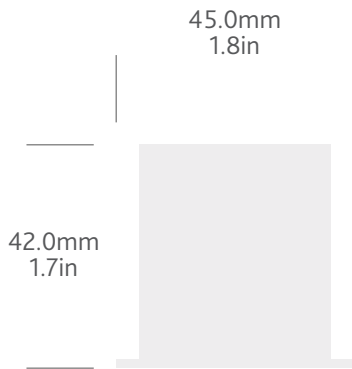
VECA-CA025-R1  
Click-Connect Cable 0.25m

Dimmable Drivers page 36

Online SPEC GUIDE  
for more information 

# VECTOR V36R OPTIC / IP50

V36R OPTIC offers designers a recessed linear solution for wall grazing, narrow and wide beam lighting effects.



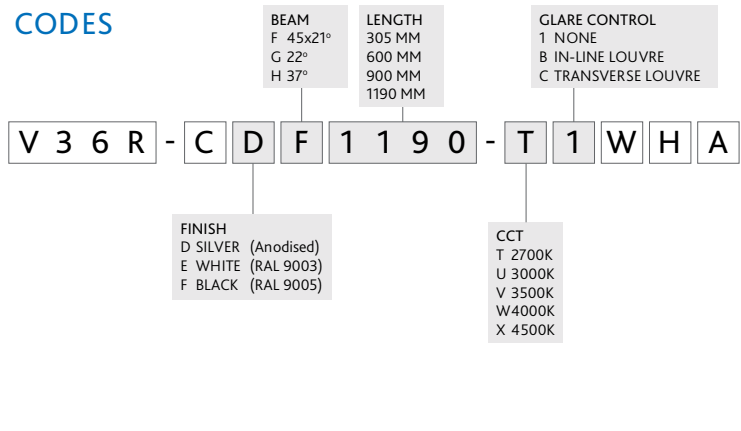
## KEY FEATURES

- ColorCORE® 3-Step
- $\leq 3000\text{lm/m}$
- $\leq 58\text{w/m}$
- $\leq 52\text{lm/w}$
- $\leq 91$  CRI
- 2700 - 4500K CCT
- 500mA CC
- IP50





CODES



DRIVERS

P35-065-D10  
350mA 65w Dim 0-10v

P35-100-D10  
350mA 100w Dim 0-10v

P50-065-D10  
500mA 65w Dim 0-10v

P50-150-D10  
500mA 150w Dim 0-10v

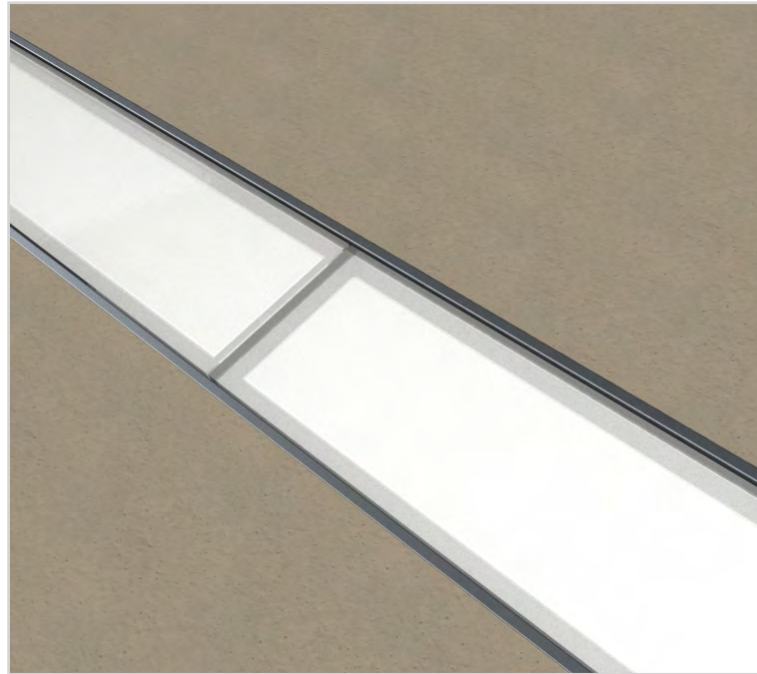
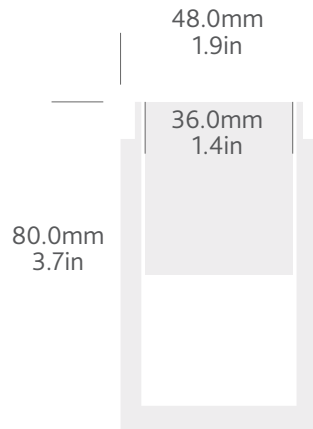
Dimmable Drivers page 36

Online SPEC GUIDE  
for more information



# VECTOR V36I / IP68

Vector V36I IP68 in-ground profile 36.0mm wide with OPX™ opal glass diffuser for creating a continuous zero-imaging line-of-light in the ground.



## KEY FEATURES

ColorCORE®

≤ 3300lm/m

≤ 36w/m

≤ 94lm/w

In-Ground

Continuous Line-of-light

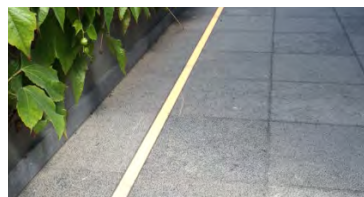
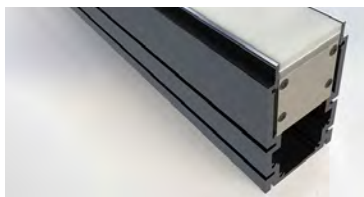
2000 - 4500K CCT

24VDC CV

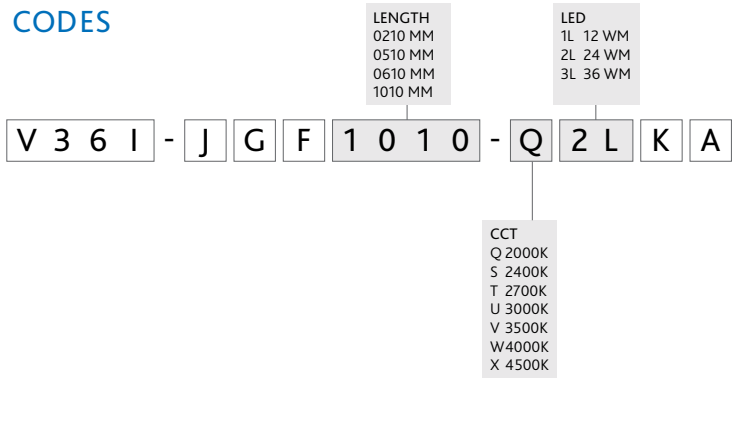
IP68 







CODES



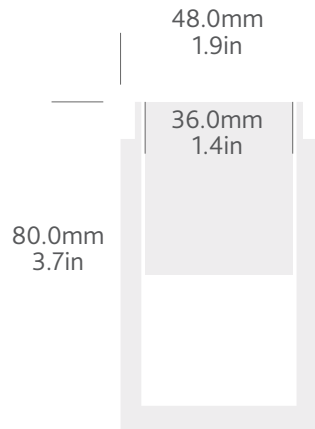
ACCESSORIES

- V36G-B2050-R1  
Ground Channel 2050mm
- V36G-MB201-R1  
Ground Channel Clip (10pcs)
- V36G-MB202-R1  
Ground Channel Caps (pair)
- V36I-MA204-R1  
Removal tool
- VECA-CA001-R1  
IP68 2-Cable Connector
- VECA-CA003-R1  
IP68 4-Cable Connector
- Dimmable Drivers page 36

Online SPEC GUIDE  for more information

# VECTOR V36I OPTIC / IP67

V36I OPTIC offers designers an in-ground solution for wall-grazing, narrow and wide beam lighting effects.



## KEY FEATURES

ColorCORE® 3-Step  
≤ 3000lm/m  
≤ 58w/m  
≤ 52lm/w  
≤ 91 CRI  
2700 - 4500K CCT  
500mA CC  
IP67 





**CODES**

<b>BEAM</b> F 45x21° G 22° H 37°	<b>LENGTH</b> 310 MM 605 MM 900 MM 1195 MM	<b>GLARE CONTROL</b> 1 NONE B IN-LINE LOUVRE C TRANSVERSE LOUVRE
---	--	---

V 3 6 I - J G F 1 1 9 0 - T 1 W H A

<b>CCT</b> T 2700K U 3000K V 3500K W 4000K X 4500K
---

**ACCESSORIES**

- V36G-B2050-R1  
Ground Channel 2050mm
- V36G-MB201-R1  
Ground Channel Clip (10pcs)
- V36G-MB202-R1  
Ground Channel Caps (pair)
- V36I-MA204-R1  
Removal Tool
- VECA-CA001-R1  
IP68 2-Cable Connector
- VECA-CA003-R1  
IP68 4-Cable Connector
- Dimmable Drivers page 36

Online SPEC GUIDE  for more information

# VECTOR DRIVERS

Vector LED drivers are ideally suited to powering any of our linear Vector lighting products and have 0-10v analogue, DALI or TRIAC (leading-edge) dimming built-in as standard.



## KEY FEATURES

- 24VDC / CC Output
- 60/90/100/120/200W
- 100-305 VAC Input
- 0-10V Dimming
- DALI Dimming
- Triac Dimming
- Low level <1% control



### VECTOR DC DRIVERS

P24-100-D10*	100w	0-10v	P24-60-D10	60w	0-10v
P24-120-D10	120w	0-10v	P24-90-D10	90w	0-10v
P24-200-D10*	200w	0-10v			
P24-100-DAL	100w	DALI			
P24-200-DAL	200w	DALI			
P24-100-PH	100w	TRIAC			
P24-200-PH	200w	TRIAC			

\*not suitable for 5WM

### V36 OPTIC CC DRIVERS



P35-065-D10	350mA 65w
P35-100-D10	350mA 100w
P50-065-D10	500mA 65w
P50-150-D10	500mA 150w

Online SPEC GUIDE  
for more information



# DIMMING INTERFACES

LinearDrive dimming interfaces from eldoLED provide smooth, flicker-free dimming from 100% down to 0.1%.



## KEY FEATURES

12-24V DC CV Output

8A max

24V Input

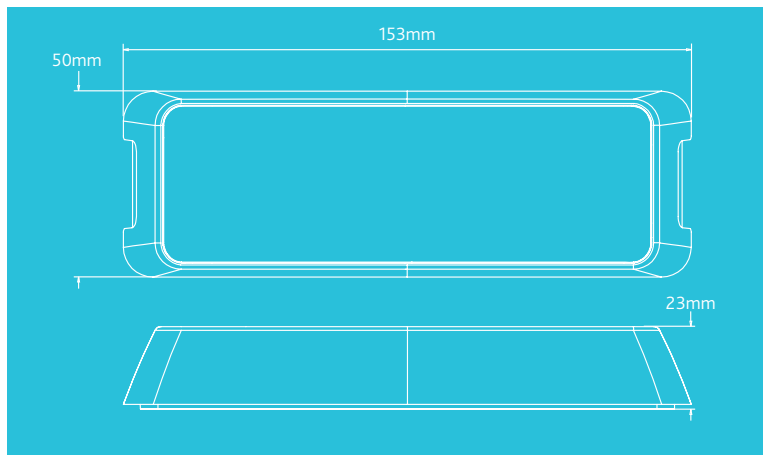
0-10V

DALI

DMX

Low level 0.1%





### MODEL NUMBERS

UDI-108-D10  
24 VDC 8A      0-10V

UDI-108-DAL  
24 VDC 8A      DALI

UDI-108-DMX  
24 VDC 8A      DMX

Online SPEC GUIDE  
for more information

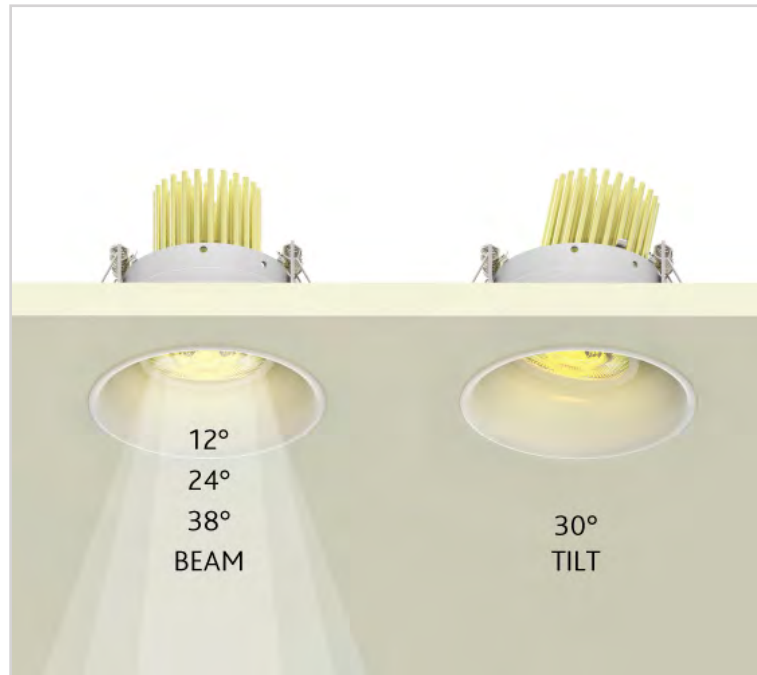


# STEORRA 66 / IP20 / IP64

- ZERO™ trimless
- STEALTH semi-trimless
- FRAME with trim

High colour rendering with ColorCORE® Engine 95Ra in 12°, 24° or 38° beam angles.

Designed for ceiling recess depths of just 99mm.



## KEY FEATURES

Zero / Frame / Stealth Trims

ColorCORE® ENGINE

12° | 24° | 38°

2400 – 4500K CCT

3-Step SDCM

≤ 95 CRI

IP20 / IP64

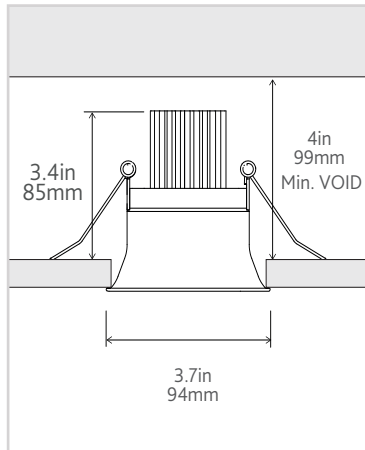
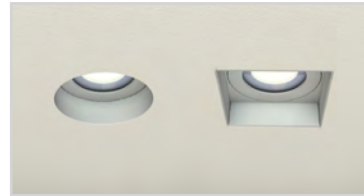
Fixed / Adjustable

0-10V | DALI | TRIAC Dim

99mm Recess Depth







### ACCESSORIES

S66A-AA001-R2  
Relamping Tool

S66A-AA050-R2  
Honeycomb Louvre

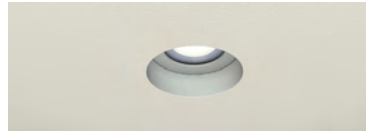
S66A-AA055-R2  
Frosted Glass

Dimmable Drivers Page 45

Online SPEC GUIDE  
for more information



# STEORRA 66 / IP20 / IP64



Zero Round



Frame Round



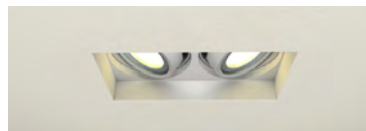
Stealth Round



Zero Square



Frame Square

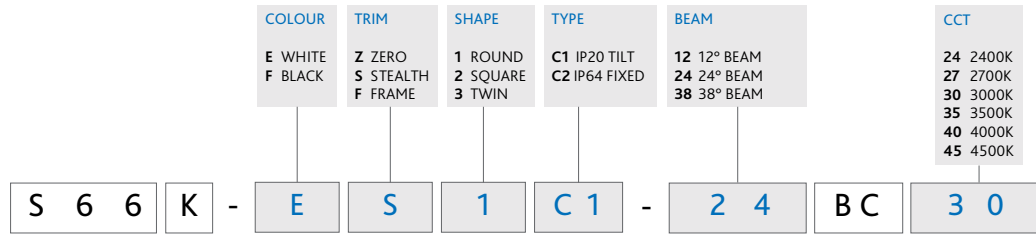


Zero Rectangle



Frame Rectangle

CODES



EXAMPLE ABOVE:  
STEORRA 66 WHITE STEALTH ROUND TILT IP20 24° 3000K (EXCLUDES DRIVER)

# COLORCORE® ENGINE

Using the same CCTs and high colour rendering, ColorCORE® ENGINE is the perfect match to VECTOR.

Clean, pure optical beams in 12°, 24° and 38°. CCT from Sunset Warm White 2400K through to 4500K.

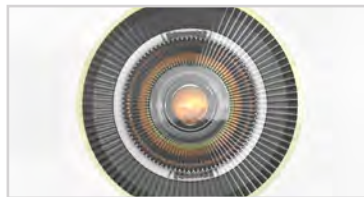
Dimmable down to 1% with smooth, flicker-free dimming control.



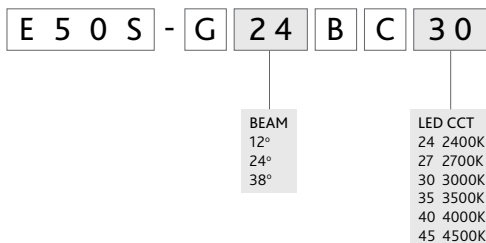
## KEY FEATURES

ColorCORE®  
≤ 900 lumen  
12° | 24° | 38°  
2400 – 4500K CCT  
3-Step SDCM  
Ø50mm x 72mm  
≤ 95 CRI  
≤ 75 lm/w  
300mA CC  
12W





### CODES



### ACCESSORIES

- P30-016  
Non-dimmable Driver
- P30-016-D10  
0-10v Dimmable Driver
- P30-016-PH  
TRIAC Dimmable Driver
- P30-030-DAL  
DALI Dimmable Driver

Online SPEC GUIDE  
for more information 

# SOLIDEDGE

SolidEdge plasterboard edge-lighting system for creating ultra-sharp interior coves, slots or rafts in plasterboard walls and ceilings.



## KEY FEATURES

Ultra-sharp trimless edging

Wall | Ceiling

Rafts | Slots | Coving

Slide & Tilt Spots

Linear Vector LED

E-13 13mm (1/2in)

E-16 16mm (5/8in)

E-25 25mm (1in)





SOLIDEDGE Slide & Tilt Spots @ Ideaworks Monaco Showroom

## CODES

### PROFILES

E13A-200-R1	E-13 (0.5in) 2m (6.5ft) Pair
E16A-200-R1	E-16 (5/8in) 2m (6.5ft) Pair
E25A-200-R1	E-25 (1.0in) 2m (6.5ft) Pair

### POINT SOURCE

S66E-E/F002-R2	Slide & Tilt Spot E White / F Black
E50S-G24BC30	ColorCORE® Engine (See page 44)
S66A-AA010-R2	Lamp Kit GU5.3
S66A-AA011-R2	Lamp Kit GU10

### CORNERS / SLOTS / JOINS

E13/16/25B-020-R1	Internal Corner
E13/16/25B-030-R1	External Corner
E13/16/25B-040-R1	Slot End Pair 80mm (3.2in)
E13/16/25B-050-R1	Slot End Pair 130mm (5.1in)
E00A-001-R1	Linear Joining Kit Pair

### VECTOR MOUNTS

V10S-MA670-R1	V10S Rotation Mount 20pc
V12S-MA520-R1	V12S Standard Mount 20pc
V12S-MA620-R1	V12S Rotation Mount 20pc

## ACCESSORIES

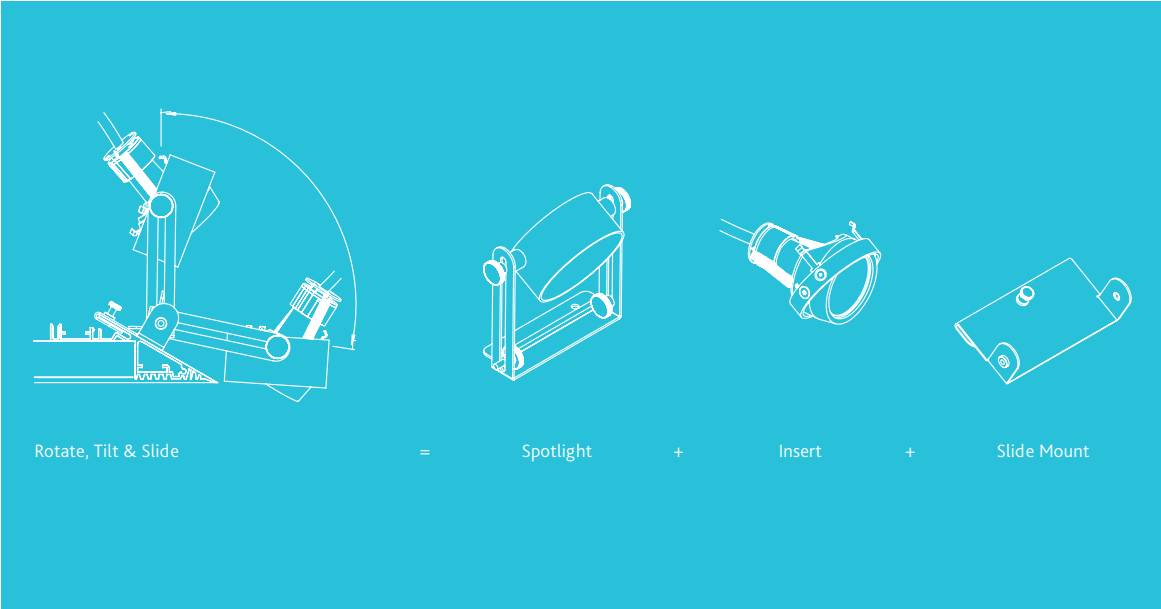
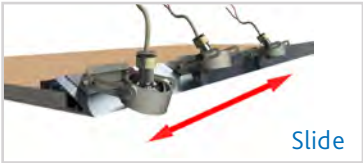
- S66A-AA001-R2  
Insert Removal Tool
- S66A-AA002-R2  
Long Grub Screw Kit
- S66A-AA050-R2  
Honeycomb Louvre
- S66A-AA055-R2  
Frosted Glass

Online SPEC GUIDE  
for more information



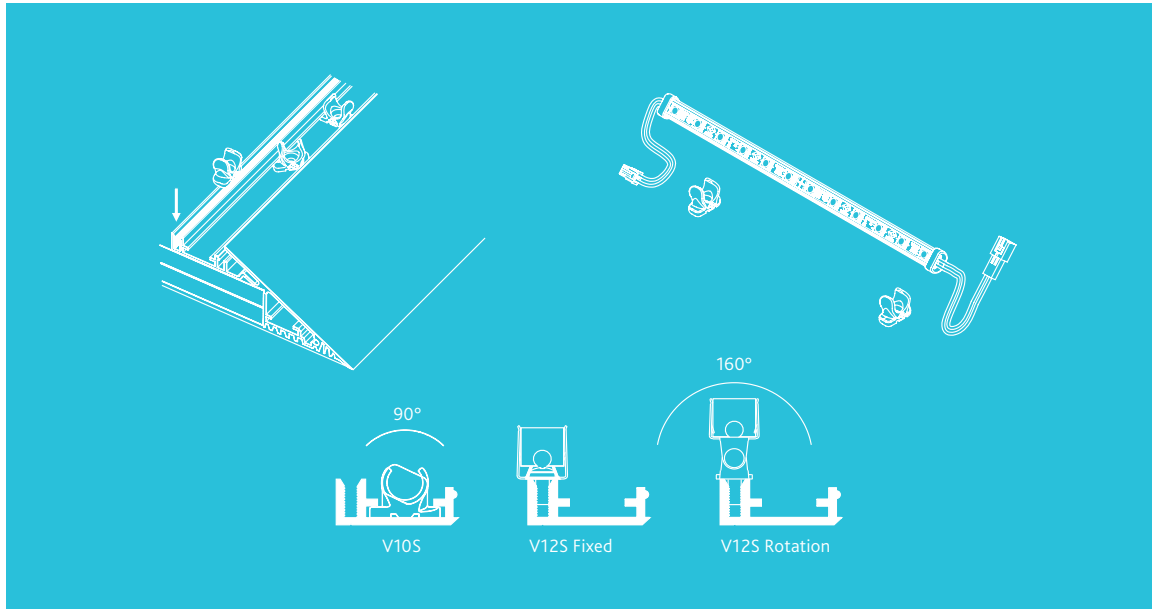
# SOLIDEDGE

## SLIDE & TILT SPOT





VECTOR COVE LIGHTING



# PROJECTS



Designer Martin Brudnizki Design Studio  
and Maurice Brill Lighting Design  
Location London, UK

## The Ivy

Ambient lighting is provided by Lumino's Vector V10S cove lighting profile using our new High CRI LEDs in Candlelight Warm White 2000K

lumino.lighting



Designer Arup  
Location Sydney, Australia

**8 Chifley**  
Vector V12S in IP67 specification was chosen to uplift levels including the 34th floor gardens of this energy efficient, award winning building



LUMINO

# PROJECTS



Designer GA Design  
Location London, Whitehall

## Corinthia Hotel

A contemporary interpretation refurbishment of this historic building used several thousand metres of Vector products including V10S, V12S and V20S

lumino.lighting



Designer Ideaworks  
Location Monaco

**Ideaworks Showroom Monaco**  
Exclusive lighting showroom in the heart of Monaco fitted with trimless SolidEDGE plaster-in profile and Slide & Tilt Spots.

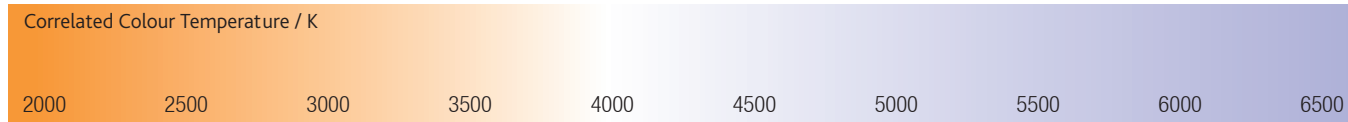


LUMINO

# DEFINITIONS

## CCT

The Correlated Colour Temperature of a black-body radiator which, to human colour perception most closely matches the light from the lamp. Colour temperatures over 4000K are cool colours (blue-white), lower colour temperatures are warm colours (yellow-white through orange-red). CCT is conventionally stated in the unit of absolute temperature, the kelvin, having the unit symbol K normally rounded to the nearest 100K.



## LUMEN OUTPUT

The Lumen (lm) is the SI derived unit of luminous flux, a measure of the total amount of visible light emitted by a source.

## LUX

The Lux (lx) is the SI unit of illuminance used as a measure of intensity, as perceived by the human eye, of light that hits or passes through a surface. It is equal to one lumen per square metre.

## CRI

The colour rendering index (CRI) is a quantitative measure of the ability of a light source to reveal the colours of various objects faithfully in comparison with an ideal or natural light source. Light sources with a high CRI are desirable in colour-critical applications.

## PowerTHRU

The PowerTHRU marking indicates a Vector product made to carry power through to the next product in line. This enables longer runs of linear lighting to be achieved without additional wiring, subject to maximum restrictions.

**CLICK-CONNECT**

The proprietary plug and play power connector system used for Vector products. Male and female connectors designed for easy installation in 2-pin or 4-pin configuration designed to carry 24VDC power. Not suitable for wet locations.

**IDC CONNECTORS**

The Insulation Displacement Connectors are ideal for wet locations providing effective water and moisture protection. IDC connectors require suitable pliers to clamp onto unstripped cables.

**DC & CV**

The Direct Current and Constant Voltage power requirement for Vector products. Vector products are not suitable for AC (Alternating Current) or CC (Constant Current) power supplies.

**LM/W**

The Lumens per Watt ratio is a measure of luminous efficacy that indicates how efficiently the luminaire converts electrical power into visible light. Building regulations often include minimum energy efficiency targets for lighting measured in lumens per watt.

**TM-30**

TM-30-15 describes a method for evaluating light source colour rendition, quantifying the fidelity (closeness to a reference) through a Fidelity Index (Rf) and gamut (increase or decrease in chroma) through a Gamut Index (Rg) of a light source. The method also generates a colour vector graphic that indicates average hue and chroma shifts, which helps with interpreting the values of Rf and Rg.

# TM-30 COLOUR CHART



Colour Types  
A Nature  
B Skin

C Textiles  
D Paints  
E Plastics

F Printed Materials  
G Colour Systems



# IP RATING IEC 60529

1 <sup>st</sup> Digit	SOLIDS: Protection from harmful ingress of solid foreign objects						
X	0	1	2	3	4	5	6
Untested	No protection	Back of hand and objects $\leq 50\text{mm}$	Fingers and objects $\leq 12.5\text{mm}$	Hand tools and objects $\leq 2.5\text{mm}$	Small wires and objects $\leq 1\text{mm}$	Good protection against dust	Complete protection against dust

2 <sup>nd</sup> Digit	LIQUIDS: Protection from harmful ingress of water									
X	0	1	2	3	4	5	6	7	8	9K
Untested	No protection	Drips of water vertical	Drips of water when tilted $\leq 15^\circ$	Water spray at various angles $\leq 60^\circ$	Water splash at all angles	Low pressure water jets at all angles	Strong pressure water jets at all angles	Immersion $\leq 1\text{m}$ depth $\leq 30$ mins	Immersion $\geq 1\text{m}$ depth $> 30$ mins*	Steam jet cleaning

*\*Maximum duration and conditions as defined by manufacturer*

Example:

## IP64

Complete protection against dust.

Protection from harmful ingress of water splashes from all angles.



The information in this document is subject to change without notice.

This Product Guide is intended to give an overview of product ranges as a quick reference guide and does not contain all the technical information necessary to select products for specification. More detailed technical information can be found in the full product Specifier Guides.

All performance figures shown are maximum figures; actual figures may vary according to CCT, LOR and driver characteristics. All lumen output figures shown exclude LOR factors. To identify the LOR factors and full performance figures for each product, check the Specifier Guide.

Check for latest specifications at [www.lumino.lighting](http://www.lumino.lighting)

Copyright © 2016 LUMINO

E&OE

LG-R1803

# LUMINO

Lumino Distribution Ltd  
Lumino House, Lovet Road  
Harlow Essex CM19 5TB  
United Kingdom

T +44 (0) 1279 635411  
E [info@lumino.lighting](mailto:info@lumino.lighting)

[lumino.lighting](http://lumino.lighting)

The information in this document is subject to change without notice.

This Product Guide is intended to give an overview of product ranges as a quick reference guide and does not contain all the technical information necessary to select products for specification. More detailed technical information can be found in the full product Specifier Guides.

All performance figures shown are maximum figures; actual figures may vary according to CCT, LOR and driver characteristics. All lumen output figures shown exclude LOR factors. To identify the LOR factors and full performance figures for each product, check the Specifier Guide.

Check for latest specifications at [www.lumino.lighting](http://www.lumino.lighting)

Copyright © 2016 LUMINO

E&OE

LG-R1802